

ASHMORE ROAD, W9

£1,095,000



NEW
PROPERTY



A MUST SEE!!!

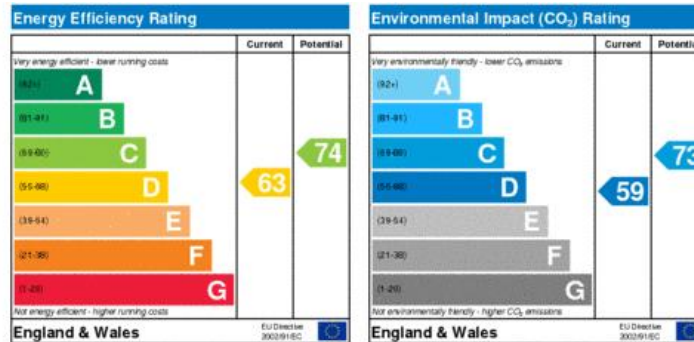
A truly stunning property this maisonette has been renovated to the highest of standards giving you accommodation over two floors with three double bedrooms and stunning garden outside space. Conveniently located in Maida Vale close to all transport links.

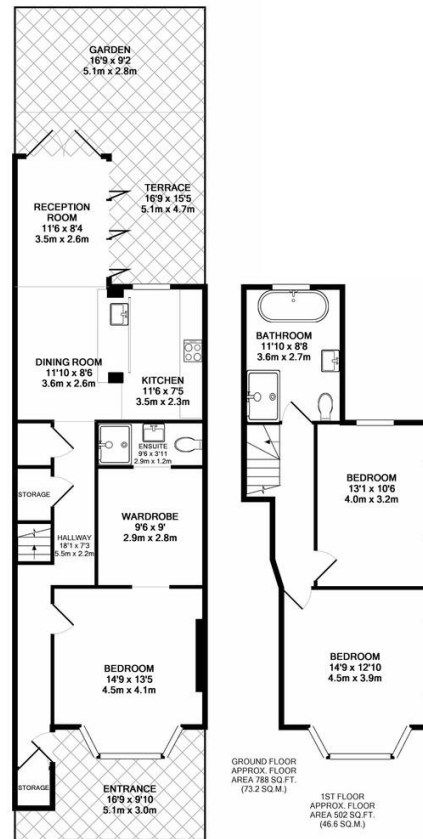




WHAT ELSE...

- Master bedroom with walk in wardrobe and ensuite
- Three double bedrooms
- Benefits from a beautiful private garden
- Stunning reception/kitchen with ample space
- Stylish bathrooms
- Excellent location
- Walking distance to both Westbourne Park and Queens park stations
- Finish to the highest quality
- Energy Efficiency Rating D.





TOTAL APPROX. FLOOR AREA 1290 SQ.FT. (119.8 SQ.M.)

Whilst every attempt has been made to ensure the accuracy of the floor plan contained here, measurements of doors, windows, rooms and any other items are approximate and no responsibility is taken for any error, omission, or mis-statement. This plan is for illustrative purposes only and should be used as such by any prospective purchaser. The services, systems and appliances shown have not been tested and no guarantee as to their operability or efficiency can be given

If you are looking to sell or rent your property, would like a current market appraisal or just want to keep up to date with property news in your local area...

Call us on 0207 723 8082 or email info@keypropertylondon.com



 KEY
 Property London

44 Crawford Street, London W1H 1JS | www.keypropertylondon.com